

CB73



Profile



Light weight crane bridge

The Vaculex CB73 is a crane bridge specifically designed for fast handling of light loads. The aluminium profile has an extremely high stiffness to weight ratio. With our fully ball bearing equipped trollies and pendulum suspensions the crane bridge moves smoothly and quickly, even during very fast operation.

For example, a 3 m crane bridge complete with suspensions, lift unit trolley and hose trollies weigh only 5 kg (11lbs) and can handle loads of up to 44 kg (97 lbs). For a fast moving crane bridge system low weight is essential as it reduces the forces required to accelerate and decelerate the crane bridge. This makes it easier for the operator and reduces the risk of repetitive strain injuries.

Vaculex CB73 can easily be mounted on most existing crane tracks, both with pendulum or fixed suspensions, as the CB73 system forms the pendulum movement that is necessary for a fast moving crane bridge.

Just attach your Vaculex vacuum tube lifter to our crane bridge system and you have an almost weightless material handling system.

Can it be any easier?

- Extremely light -1.3 kg/m!
- Ergonomically designed
- Less risk of strain injuries
- Higher productivity

Technical specifications

Crane profile

Material:

Aluminium EN-AW 6063 T6
Surface conditioning: Anodic oxide film 20 µm

Profile data:

Moment of inertia with respect to the x-axis: $I_x = 305000 \text{ mm}^4$
Moment of inertia with respect to the y-axis: $I_y = 118000 \text{ mm}^4$
Section modulus with respect to the x-axis: $W_x = 8450 \text{ mm}^3$
Section modulus with respect to the y-axis: $W_y = 5900 \text{ mm}^3$
Cross section area: 486 mm^2
Weight: $1.3 \text{ kg/m} - 2.9 \text{ lbs /m}$
Maximum profile length: 6 m

Suspensions:

Materials: Carbon steel and Nitrile rubber 60°IRH
Surface conditioning: Zink plating 8µm with black chromating
Weight: $0.22 \text{ kg}/0.48 \text{ Lb}$

Travelling limit with end cover and hose suspension:

Materials: Carbon steel, Natural rubber 60°IRH and Nylon plastic
Surface conditioning: Zink plating 8µm with black chromating
Weight: $0.12 \text{ kg}/0.3 \text{ Lb}$

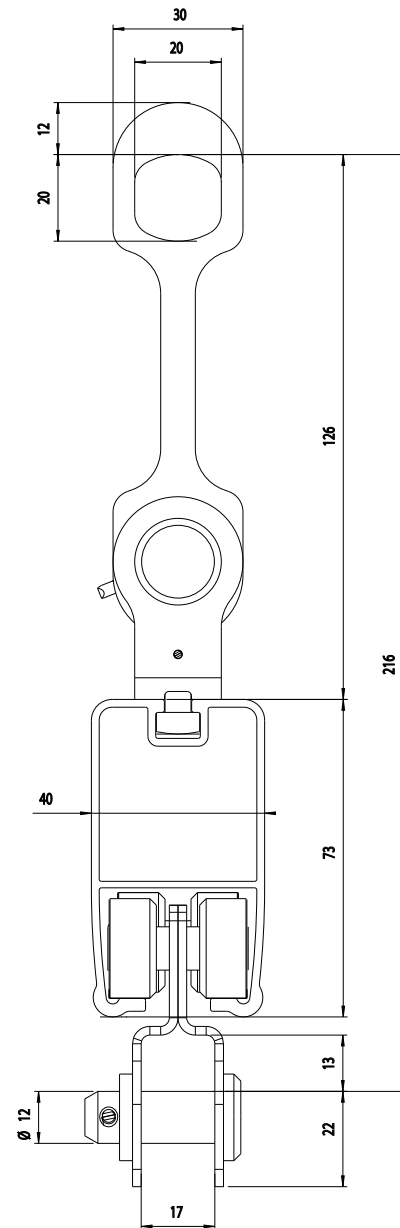
Load trolley:

Materials: Carbon steel, Stainless steel and Acetal plastic
Surface conditioning: Zink plating 8µm with black chromating
Weight: $0.31 \text{ kg}/0.7 \text{ Lb}$

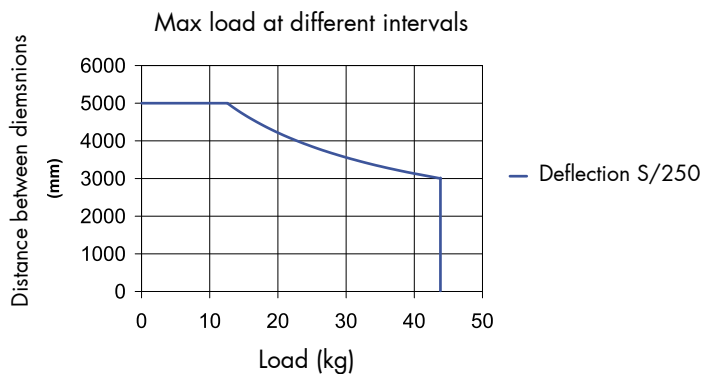
Hose trolley:

Materials: Carbon steel, Stainless steel, Acetal plastic and Nylon plastic
Weight: $0.09 \text{ kg}/0.2 \text{ Lb}$

Dimension drawing



Max load* at different suspension intervals



* Weight of the lift unit plus the weight of the goods

What do we stand for?

Vaculex AB is a world-leading manufacturer of lifting aids based on vacuum technology. Our aim is twofold: to facilitate your work in a purely physical sense – with a focus on efficiency, ergonomics and safety; and to make it easier for you, before, during and after purchase, by way of our knowledge, experience and positive approach.